

S.W. 1/4
SECTION 7, T.6N., R.2E., S.L.B. & M.

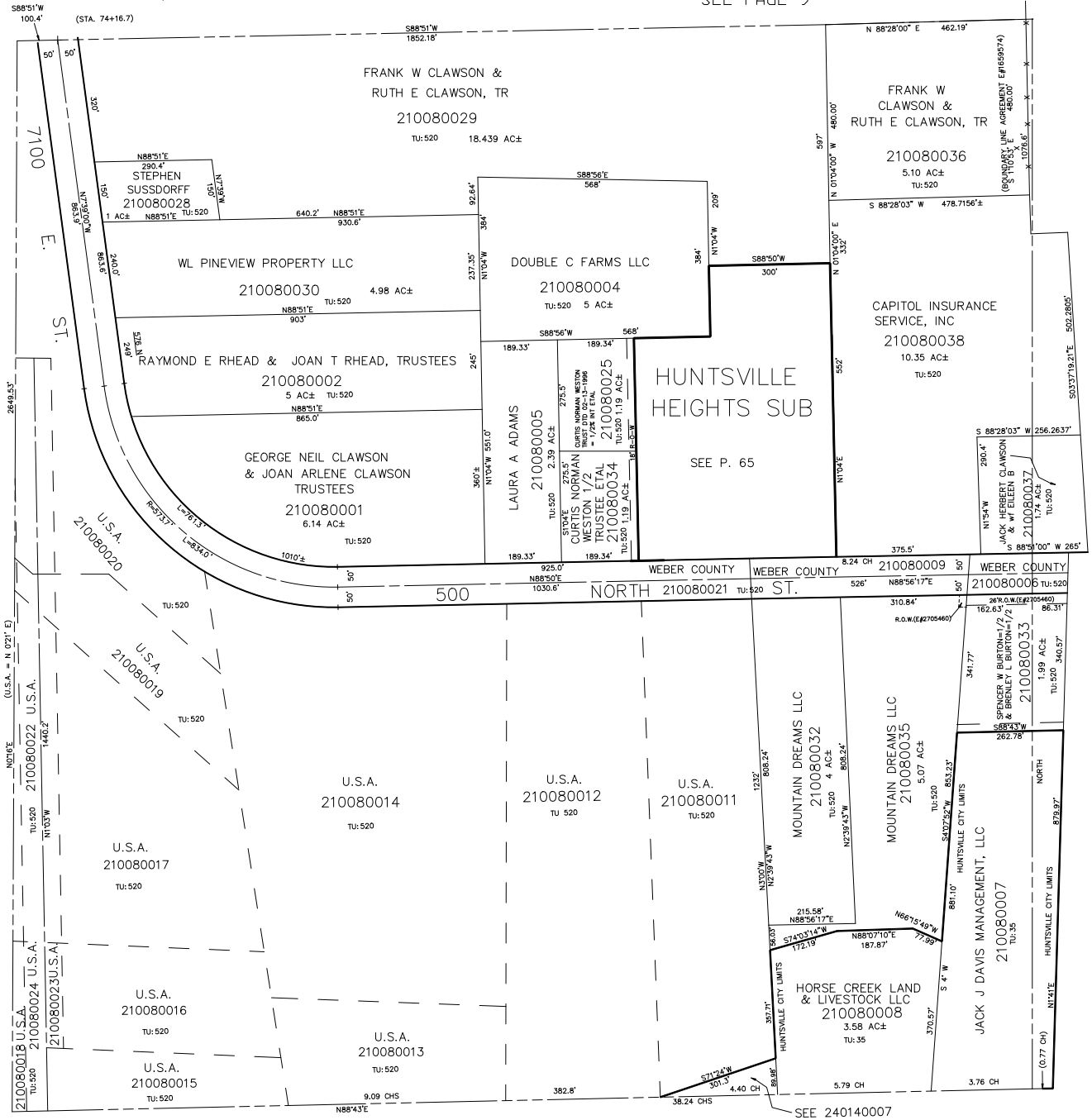
IN WEBER COUNTY
SCALE 1" = 200'

TAXING UNIT: 35, 520

SEE PAGE 9

SEE BOOK 20, PAGE 10

SEE PAGE 7



SEE BOOK 24, PAGE 15

SEE BOOK 24, PAGE 14